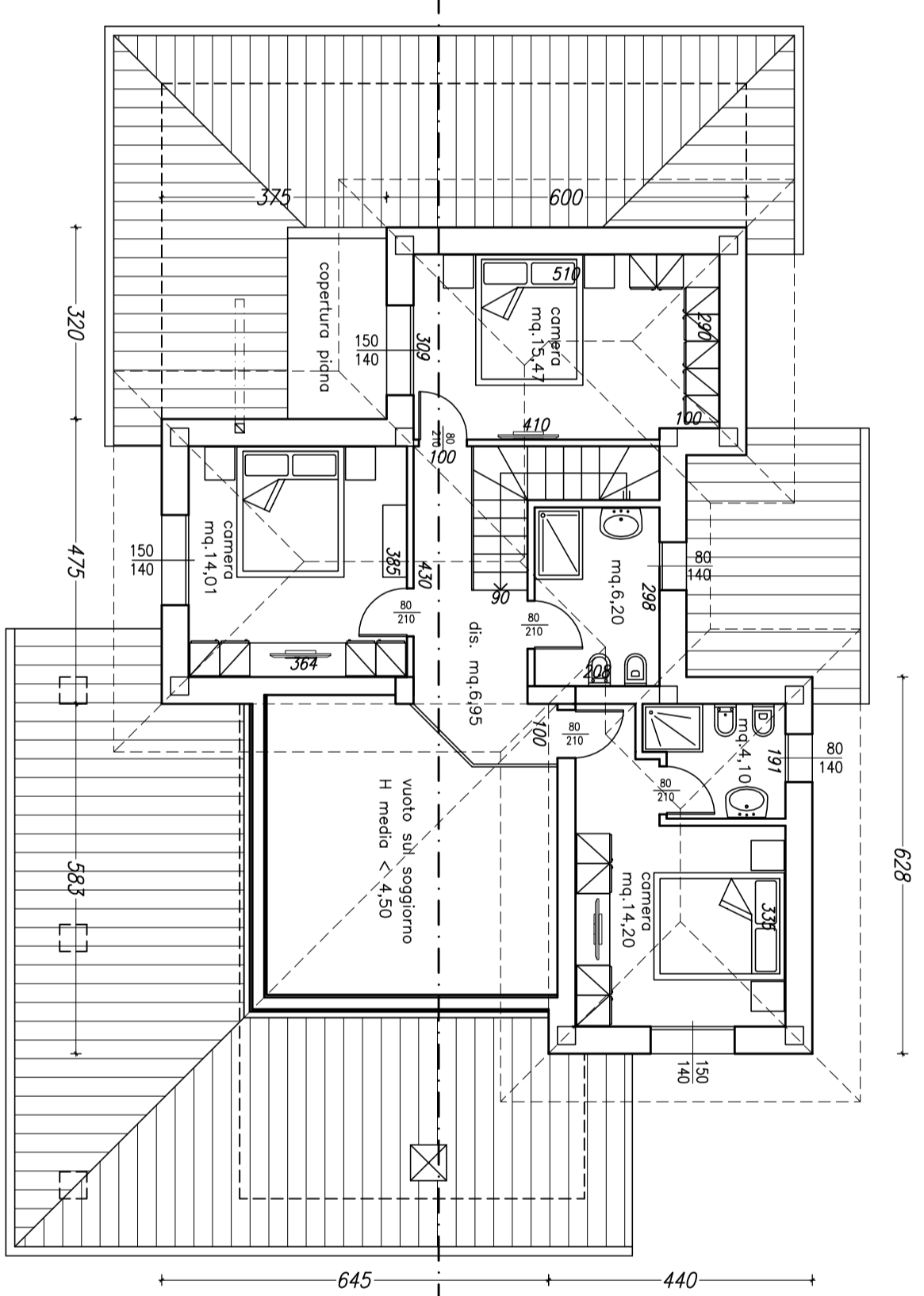


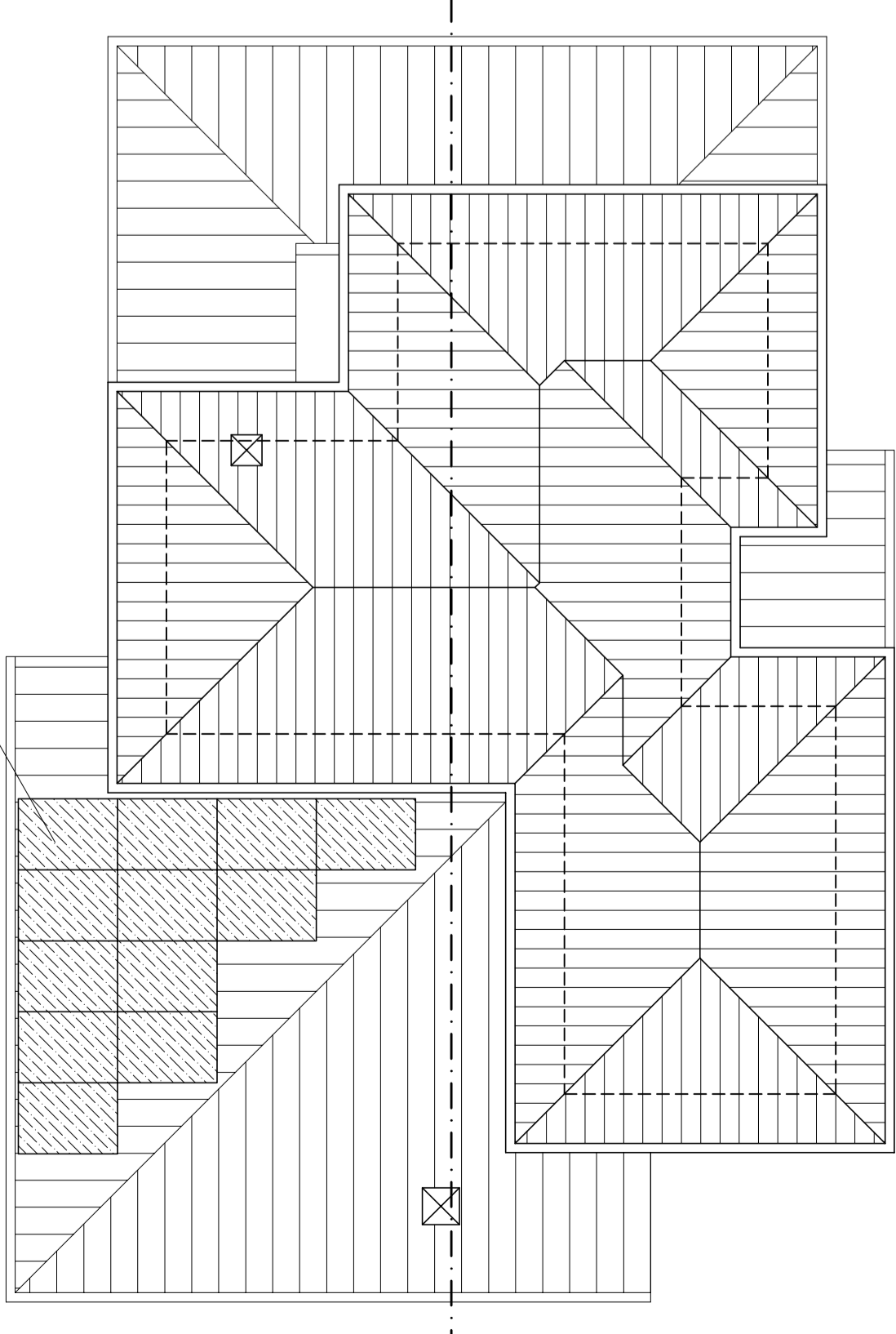
PLANIMETRIA PIANO TERRA

Sup. lorda abitazione mq. 167,98
 Sup. lorda porticati mq. 32,97 < 50,39

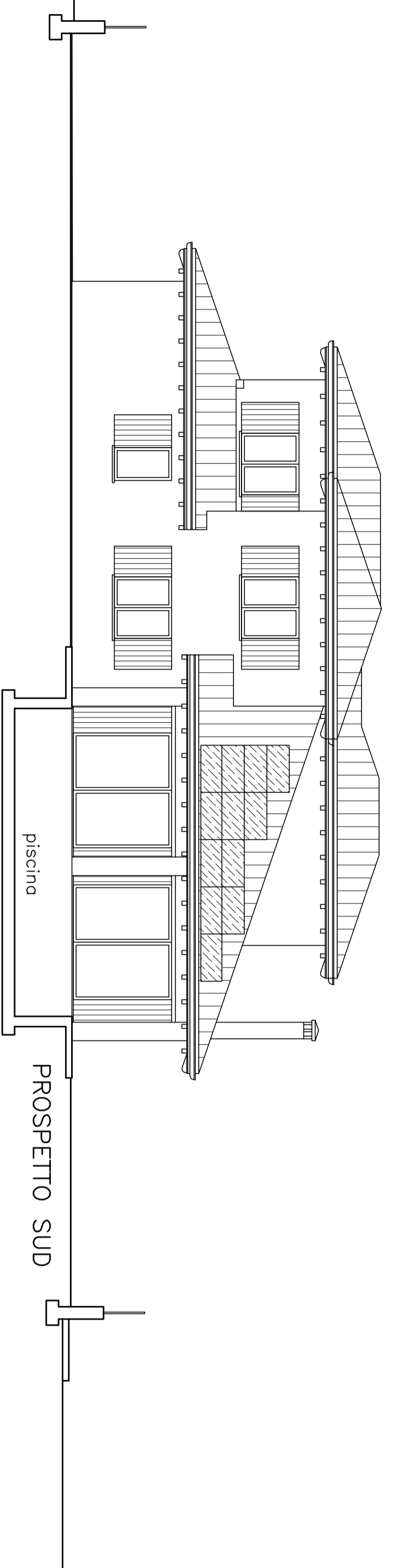


PIANTA PIANO PRIMO

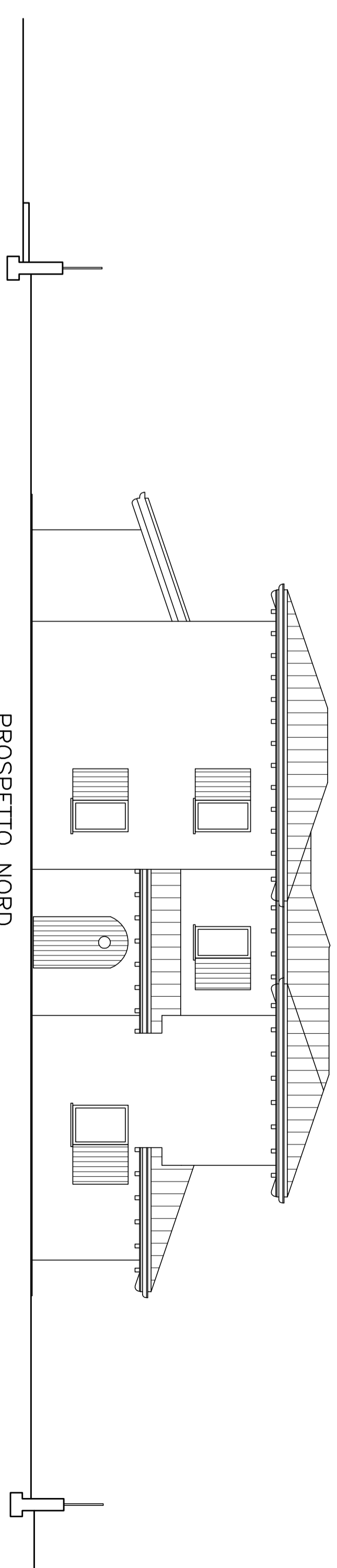
Totale s.l.p. mq. 167,98 x 3,00 = volume totale mc. 503,94



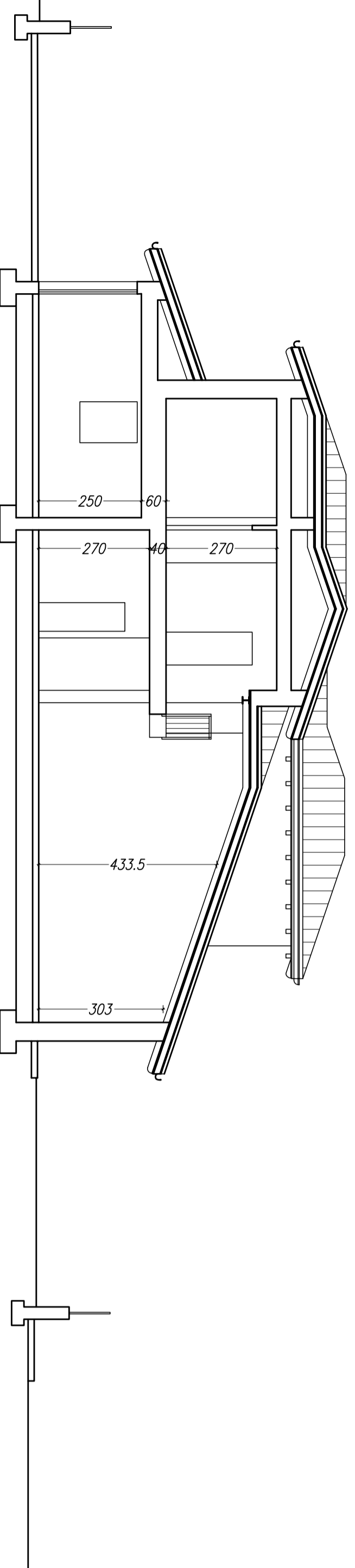
PIANTA TETTO



PROSPETTO OVEST



PROSPETTO NORD



PROSPETTO EST

